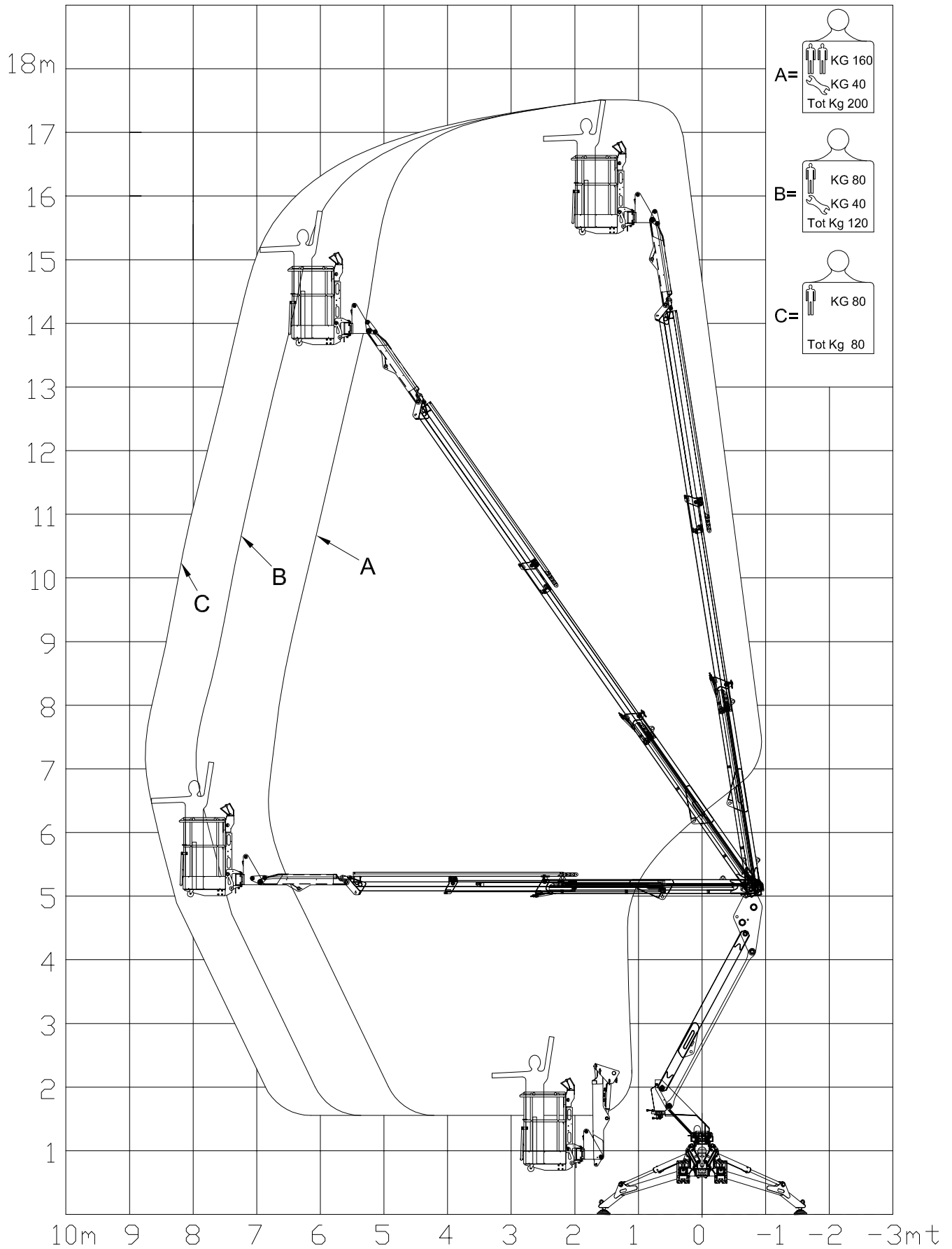
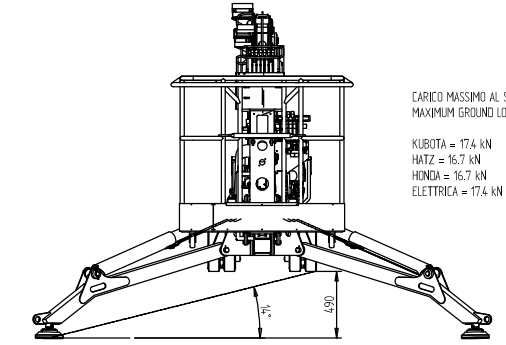
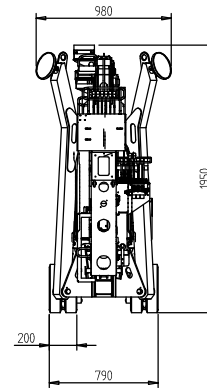
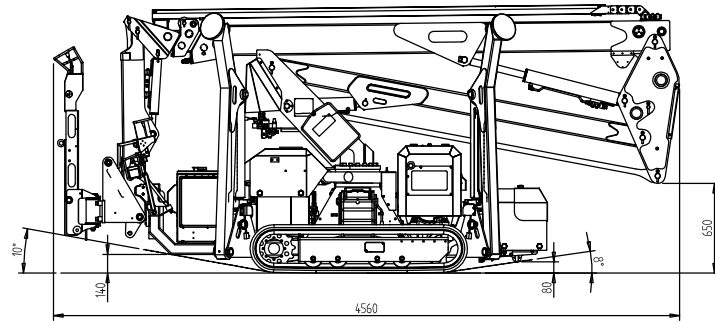


# PLATFORM BASKET

SELF-PROPELLED AERIAL WORK PLATFORMS

# SPIDER 1890 PRO



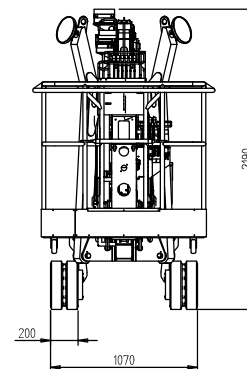
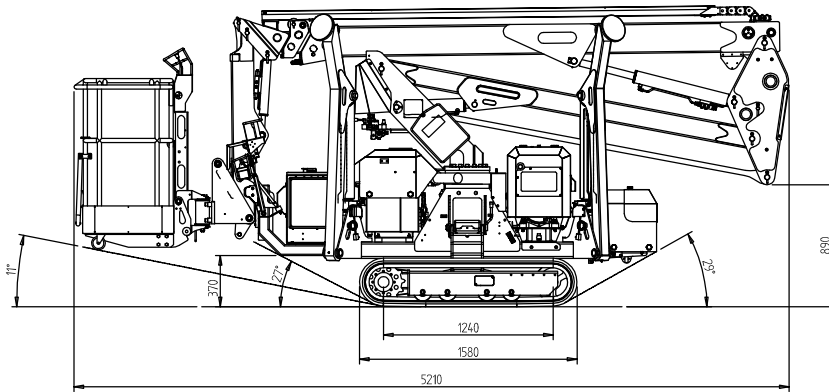


CARICO MASSIMO AL SUOLO  
MAXIMUM GROUND LOAD

KUBOTA = 17.4 kN  
HATZ = 16.7 kN  
HONDA = 16.7 kN  
ELETTRICA = 17.4 kN

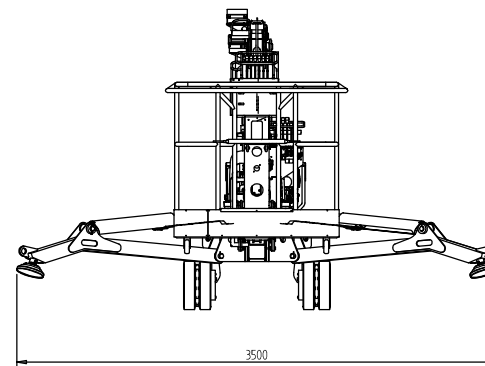
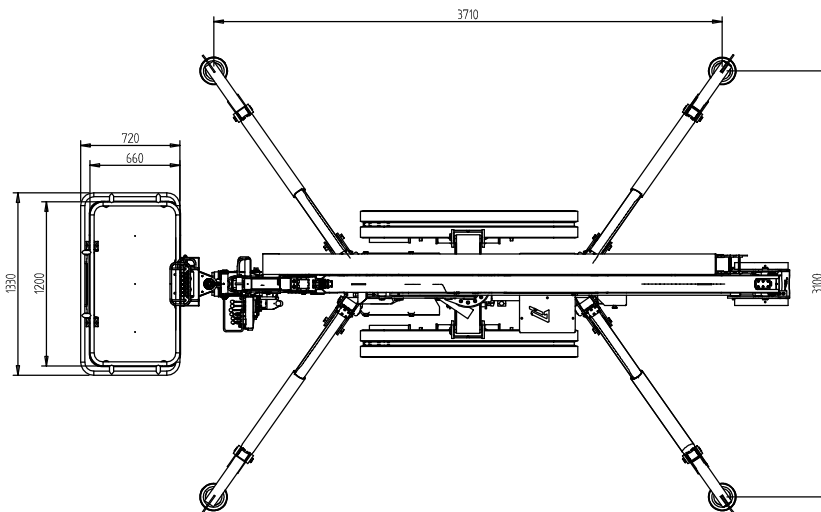
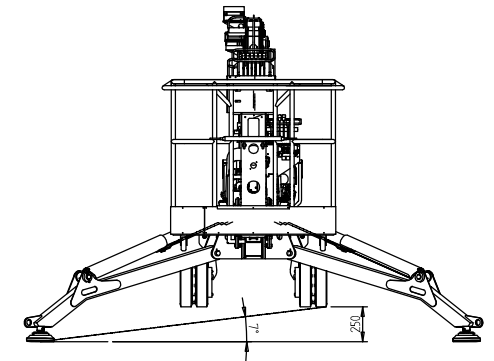
CARICO DISTRIBUITO IN POSIZIONE DI LAVORO  
SURFACE LOAD IN WORKING POSITION

KUBOTA = 2.16 kN/m<sup>2</sup>  
HATZ = 2.07 kN/m<sup>2</sup>  
HONDA = 2.07 kN/m<sup>2</sup>  
ELETTRICA = 2.16 kN/m<sup>2</sup>



CARICO DISTRIBUITO IN TRASLAZIONE  
SURFACE LOAD IN DRIVING POSITION

KUBOTA = 0.19 daN/cm<sup>2</sup>  
HATZ = 0.18 daN/cm<sup>2</sup>  
HONDA = 0.18 daN/cm<sup>2</sup>  
ELETTRICA = 0.19 daN/cm<sup>2</sup>



<b>PLATFORM BASKET</b> SELF-PROPELLED AERIAL WORK PLATFORMS		SOLLECITAZIONE GENERALE DIREZIONE GENERALE GRUPPO C.F. FRANZINI P.L. 11000 UNI 5307-83		* Il presente disegno PlatformBasket, come ogni disegno tecnico, è un documento riservato. È vietata espressamente la ristampa o l'uso non autorizzato senza permesso scritto dalla C.F. Franzini.	
Modello	Spider 1890 PRO	Disegnato	C. Franzini	DATA	04/04/12
Modello	Dimensioni - Overall dimensions	Scala	1:20	Disegnato	C. Franzini
Modello	Con rotazione navicella - with basket rotation	Autore		Disegnato	
Modello	Spider 1890 PRO	Dis. N.	4840060800		