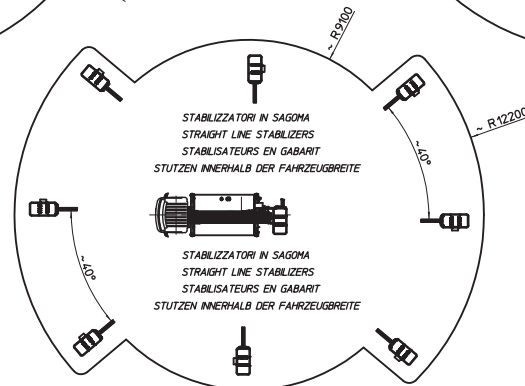
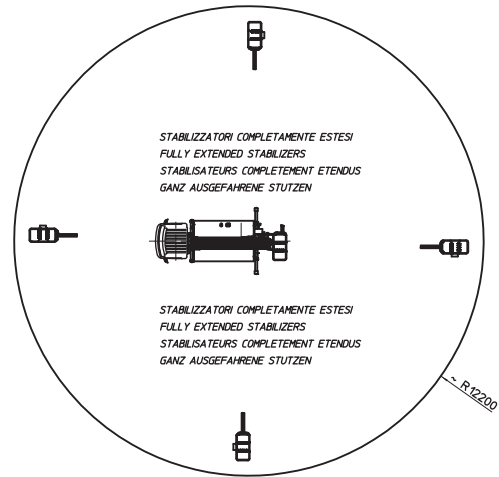
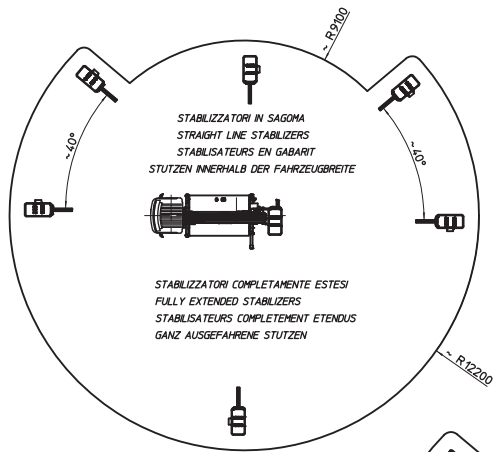


# MULTITEL

## MX 250

Ente	Rev.	Descrizione	Data	Dis.	Contr.	Ap.AQ
MRK	0	EMISSIONE	07/10/11	LB.		
INGOMBRO - SCHEDA 54/1 - Rev. 0 - 15/12/00						

D47166



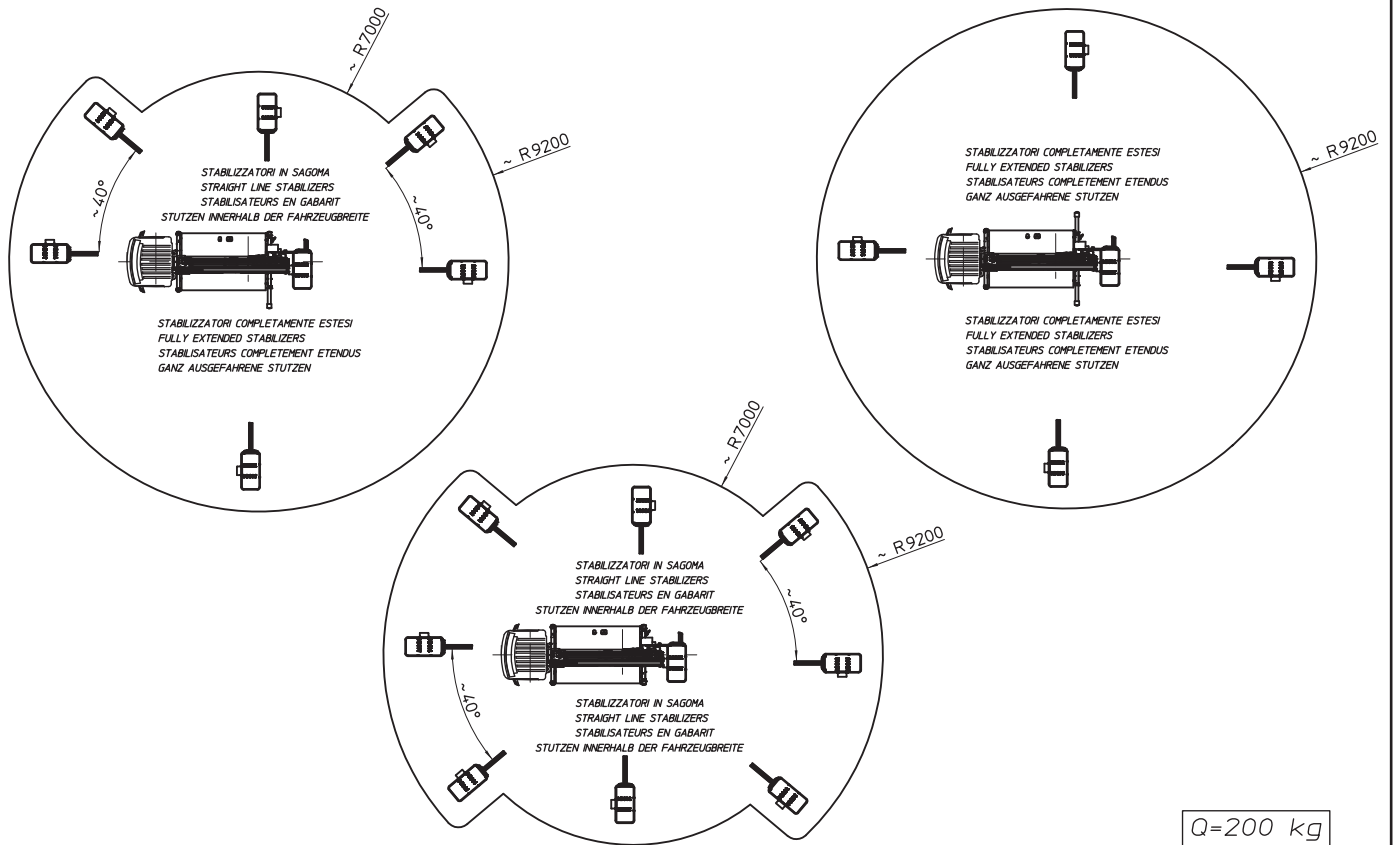
Q=80 kg

# MULTITEL

## MX 250

Ente	Rev.	Descrizione	Data	Dis.	Contr.	Ap.A0
MRK	0	EMISSIONE	07/10/11	L.B.		
INGOMBRO - SCHEDA 54/1 - Rev. 0 - 15/12/00						

D47165



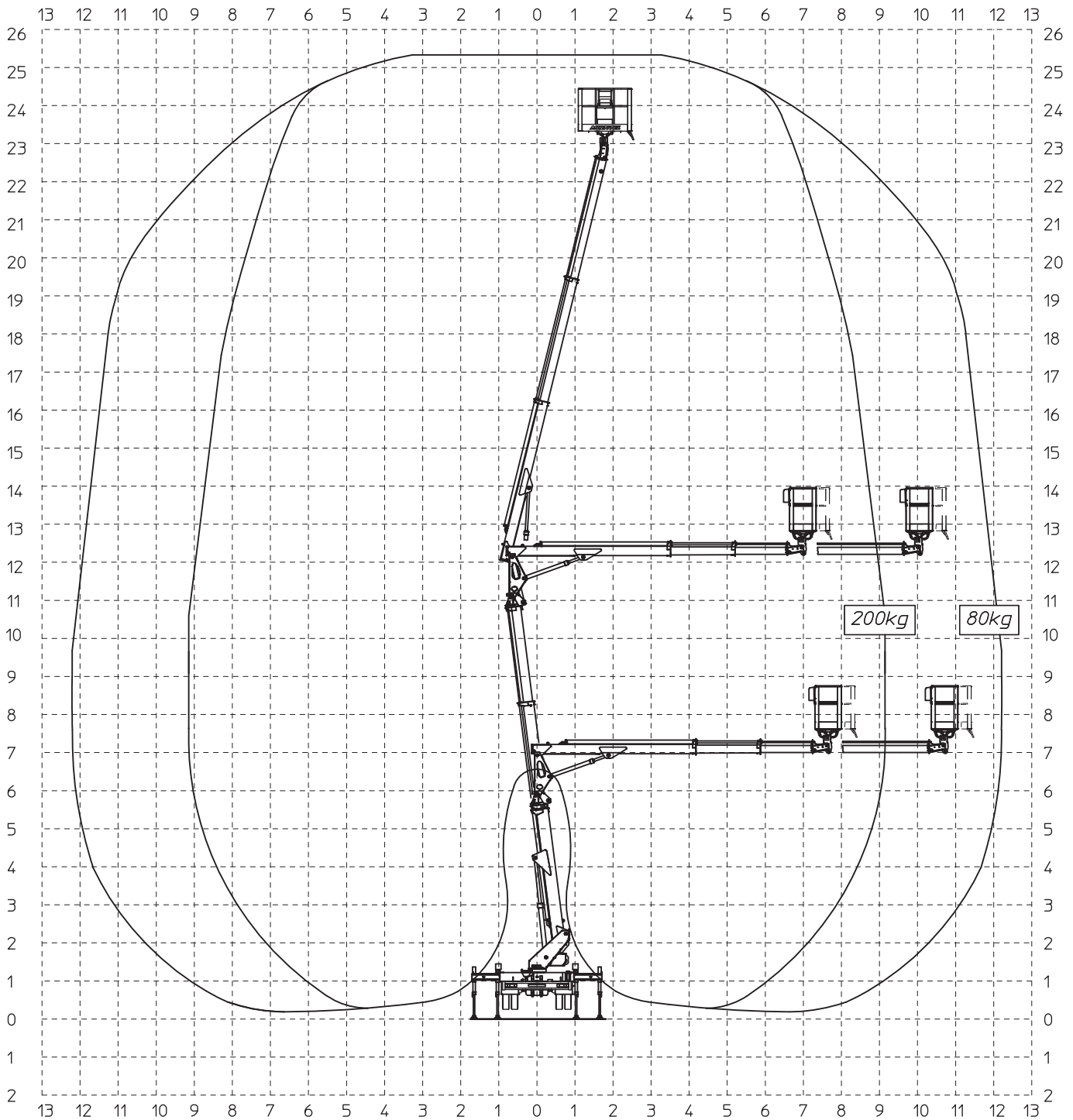
# MULTITEL

## MX 250

D46890

Ente	Rev.	Descrizione	Data	Dis.	Contr.	Ap.A0
MRK	1	EMISSIONE	28/07/11	L.B.		
DIAGRAMMA - SCHEDA 54/2 - Rev. 0 - 15/12/00						

	200kg		80kg	
SBRACCIO DI LAVORO	9.2 m	±5%	12.2 m	±5%
WORKING OUTREACH	9.2 m	±5%	12.2 m	±5%
DEPORT DE TRAVAIL	9.2 m	±5%	12.2 m	±5%
SEITLICHE REICHWEITE	9.2 m	±5%	12.2 m	±5%



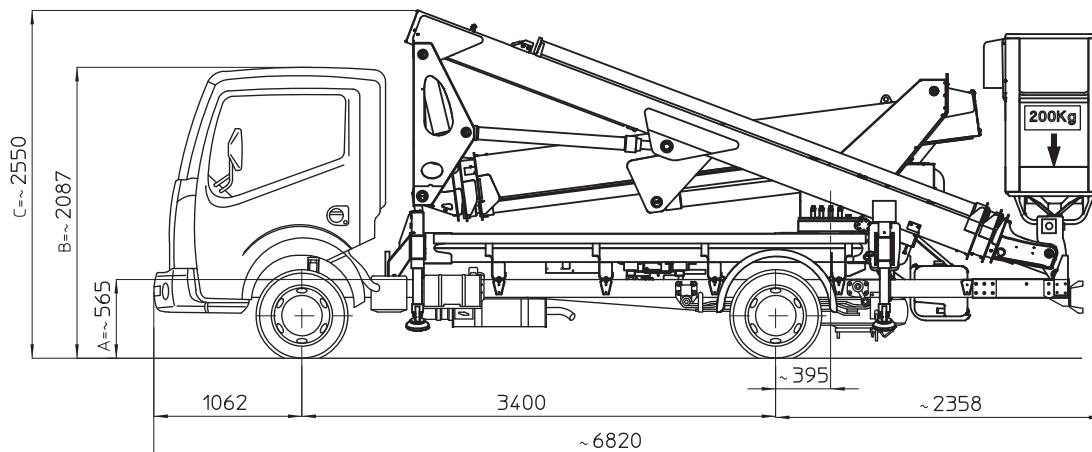
# MULTITEL MX 250

## NISSAN CABSTAR 35.12 Euro5

Ente	Rev.	Descrizione	Data	Dis.	Contr.	Ap.AQ
MRK	0	EMISSIONE	31/01/12	L.B.		

INGOMBRO - SCHEDA 54/1 - Rev. 0 - 15/12/00

D47693

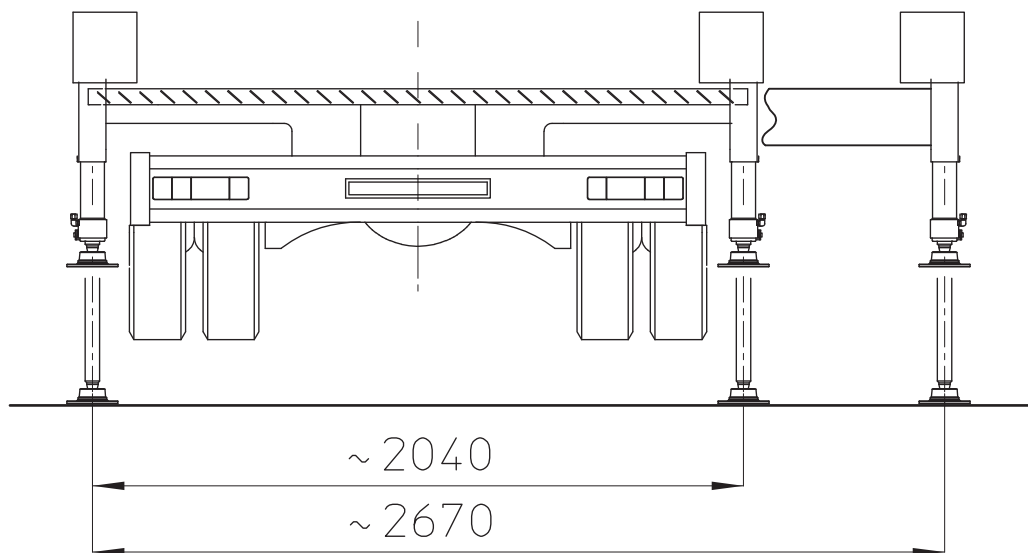


I - Le quote riportate in disegno sono indicative e possono subire variazioni. In particolare le quote A-B sono relative alle dimensioni dell'autocarro, quindi devono essere verificate sullo stesso. La quota C (altezza totale) e' subordinata alle quote A-B e non comprende eventuali parti flessibili.  
 F - Les cotes indiquée dans le dessin sont indicatives et peuvent subir des variations. En outre les cotes A-B sont relatives aux dimensions du porteur, donc elles doivent être vérifiées sur le porteur même. La cote C (hauteur totale) est subordonnée aux cotes A-B est indiquée hors flexibles.  
 E - The dimensions shown in the drawing are an indication and may undergo changes. Further the dimensions A-B are related to the truck sizes, therefore they must be verified. The dimension C (total height) is subject to A-B and does not include hoses.  
 D - Die Maße, die in der Zeichnung gezeigt werden, sind eine Anzeige und können Änderungen durchmachen. Die Abmessungen A-B betreffen die Fahrzeugmasse, daher sollen sie geprüft werden. Die Abmessung C (Gesamthöhe) hängt von A-B Abmessungen ab, die schlauche sind ausgeschlossen.

	TIPO DI STABILIZZAZIONE		PORTATA CESTELLO (kg)	
			200 kg	
DIAGRAMMI DI LAVORO	PIEDI IN SAGOMA		D46889	
	PIEDI PARZIALI			
	PIEDI ESTESI		D46890	
	SOTTOPONTE			
CARICO UTILE				
DIS. STABILIZZAZIONE	D47694			
AUTOCARRO	1° ASSE		2° ASSE	
TARE A VUOTO	1180 kg		520 kg	
MASSIMI AMMESSI	1750 kg		2200 kg	
P.T.T.	3500 kg			
NOTE:				

# MULTITEL MX 250

NISSAN CABSTAR 35.12 Euro5



D47694

Ente	Rev.	Descrizione	Data	Dis.	Contr.	Ap.AQ
MRK	0	EMISSIONE	31/01/12	L.B.		
INGOMBRO - SCHEDA 54/1 - Rev. 0 - 15/12/00						