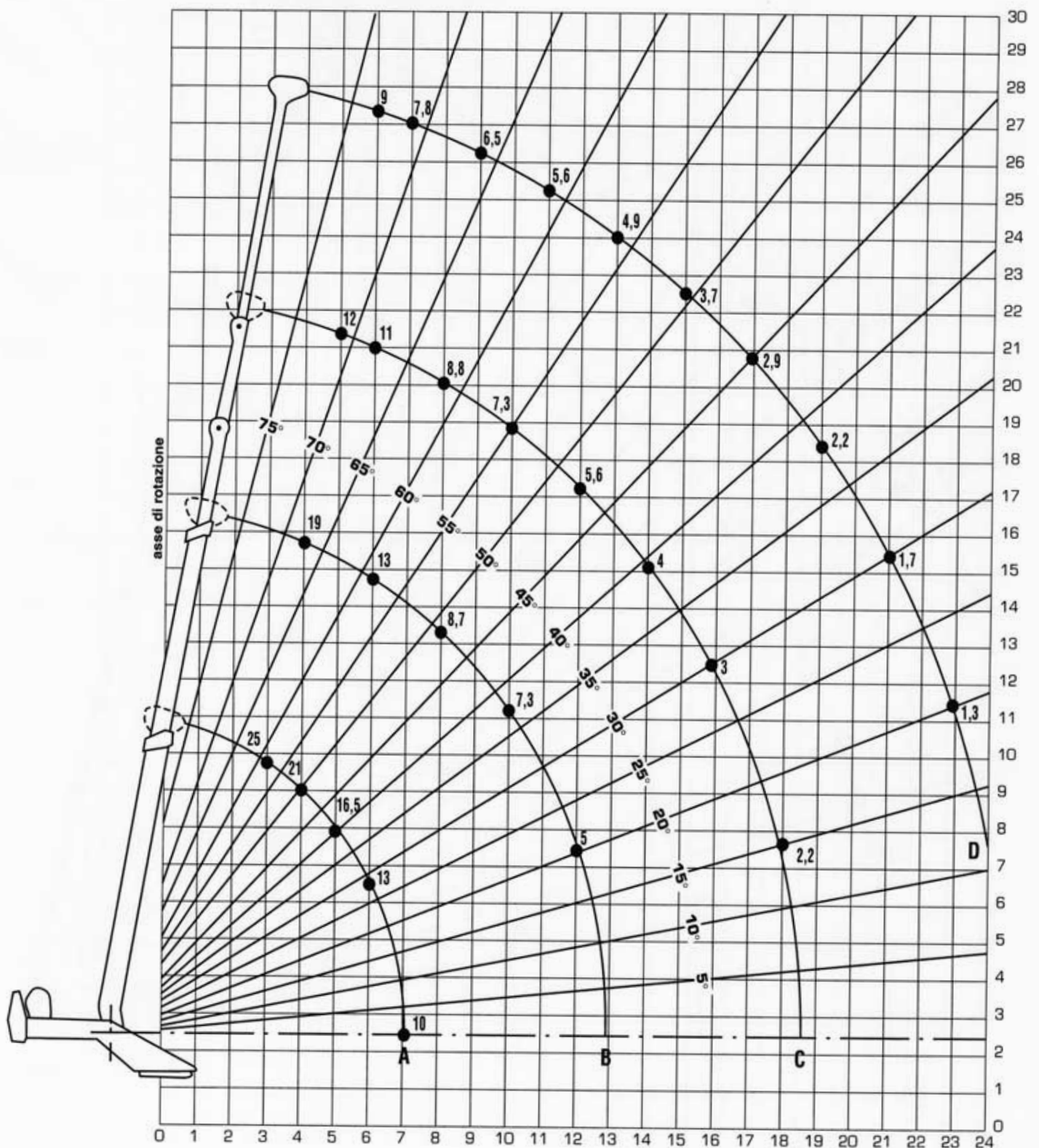




AUTOGRU - RIGO 25-30 ton.

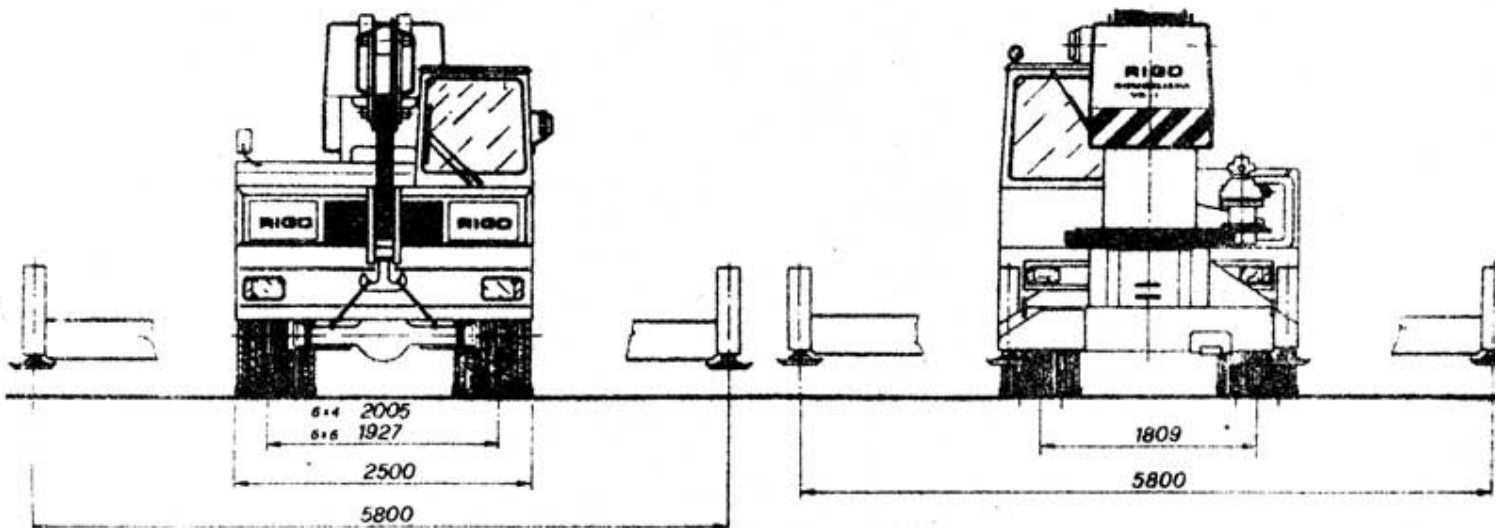
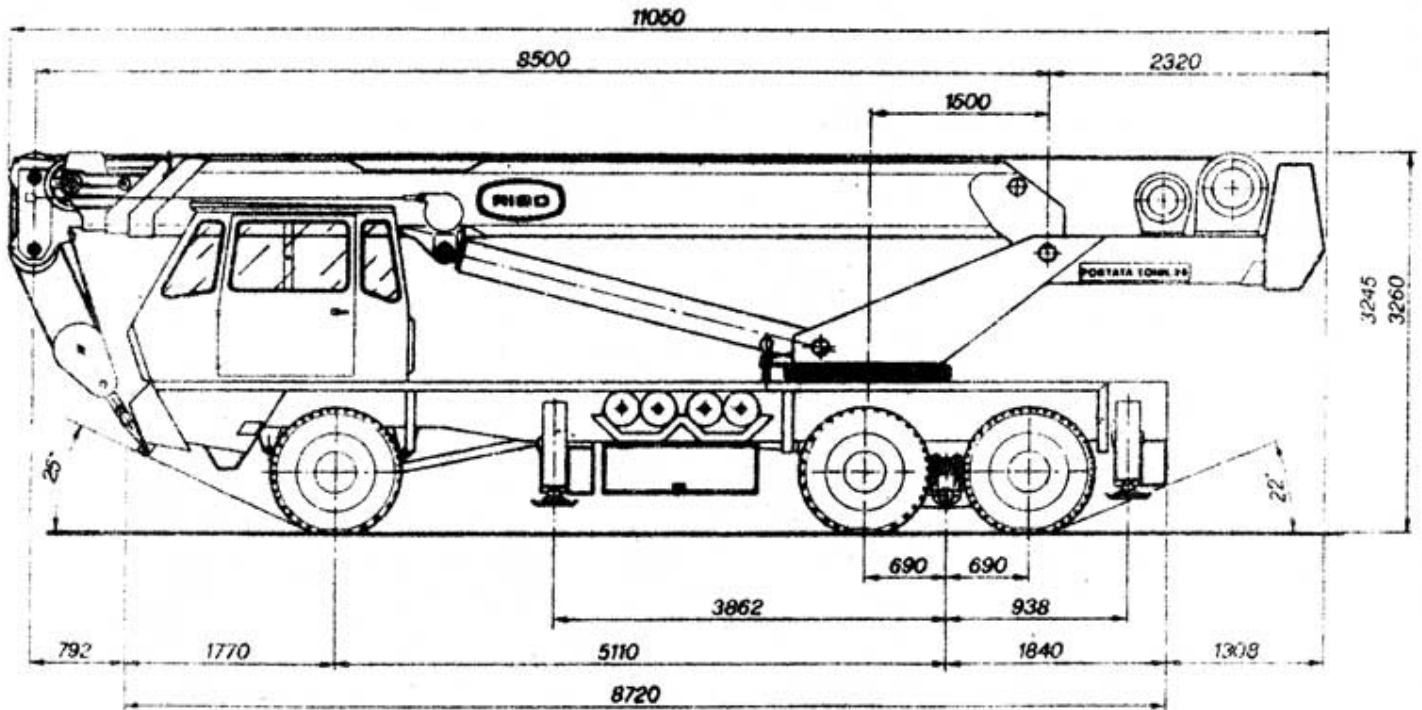
Altezze di sollevamento





I.S.S.A. Autogru s.r.l.

Peso complessivo **27.700 kg.** Peso posteriore **21.000 kg.**
Peso anteriore **6.700 kg.** Volume **90 m³**



RAGGIO MAX DI STERZATA R = 10,30 m
RAGGIO MIN DI STERZATA R = 6,825 m